



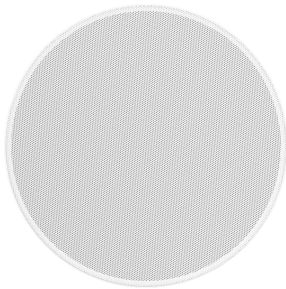
Pair 70w Active Bluetooth Ceiling Speakers

CS-1900P EU SAP: 4883105 US SAP: 13825110

vav.link/cs-1900p

Integrated 2 x 35 watt (RMS) amplifier
1 x wired input / 1 x Bluetooth input
Switches between stand alone or daisy-chain mode
IR remote included
BT can be disabled

The CS-1900P are based on Vision's passive ceiling loudspeakers but have a powerful 70 watt amplifier built in. Easy to use and virtually invisible, these professional-grade loudspeakers are ideal for meeting spaces that can be divided, or at home.



Changing Room Layout?

For function centres which have meeting rooms that can be divided into smaller meeting rooms, a relay can switch between "standalone" mode, or "daisy-chain" mode.

Bluetooth

Easy to connect to. Bluetooth can be disabled via the remote control or RS-232.

Rename Bluetooth, Set Pin

Connect via USB and run software (see downloads tab) to rename and set the pin. The speakers stores the details for up to eight paired devices. Even if you change the PIN these eight devices will still connect without needing the new pin. When you pair a 9th device the 1st device will need to enter the password again to connect.

Master/Slave

The amplifier is housed in the "master" loudspeaker which has the connection panel, and a speaker output connects to the included passive "slave" loudspeaker.

Daisy-Chain

If you require two pairs for the room an audio output allows you to pass the audio signal on to a second pair of CS-1900P. In fact you can daisy-chain as many pairs as you need using this line-level audio output.

2-Way with Kevlar Driver

Two-way woofer and tweeter design with quality materials and a passive cross-over for superior audio.

Simple to fit

A cutout template is included so the installer can easily trace the cut line in the ceiling tile. Cut a 198 mm (7.8") hole and fit the speaker; it's quick and easy.

Auto-Switching

Choose to change to the Bluetooth input automatically when a device is paired, or manually switch.

Remote Control

An included IR remote control gives the user full control, including bass and treble adjustment.

IR Front and Rear

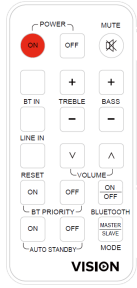
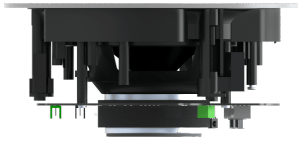
Switch between the front IR receiver, or the rear IR receiver if using a wired control system, or off.

RS-232

For integration into a controlled audio-visual environment they can be controlled with RS-232 (serial) codes. [Vision's Techconnect Control](#) can be used to control them.



VISION



Memory

When power is turned on at the wall the CS-1900P automatically turn on and resumes the previous input and volume setting.

Auto-Standby

If the amplifier senses no input for ten minutes it will automatically go into standby mode.

- **Bluetooth device NOT PAIRED when it goes into standby:** they will wake up when you pair a device or play audio through the line-level input.
- **Bluetooth device PAIRED when it goes into standby:** if the BT input was selected only the Bluetooth source will wake them up. If the line-level input was selected only a line-level input will wake them up.

Automatic standby can be disabled with the remote control.

Magnetic Grille

The bezel-less grille clips into place once the speakers are secured.

MANUAL

Manual en

EN PDF 3.16 MB

files.visionaudiovisual.com/products/CS-1900P/manuals/CS-1900P_manual_en.pdf

SOFTWARE

InstallBlueSuite 2.6.4.1046

ZIP 25.81 MB

files.visionaudiovisual.com/products/CS-1900P/software/InstallBlueSuite_2.6.4.1046.zip

FIRMWARE

Firmware

ZIP 6.29 MB

files.visionaudiovisual.com/products/CS-1900P/firmware/CS-1900P_firmware.zip

Firmware 070920

ZIP 6.95 MB

files.visionaudiovisual.com/products/CS-1900P/firmware/CS-1900P_firmware_070920.zip

IMAGE

Product Images

ZIP 26.59 MB

<files.visionaudiovisual.com/products/CS-1900P/images/CS-1900P.zip>

Menu

PNG 1.14 MB

files.visionaudiovisual.com/products/CS-1900P/images/CS-1900P_menu.png

Product Images

PNG 4.75 MB

<files.visionaudiovisual.com/products/CS-1900P/images/CS-1900P.png>

Grille

PNG 4.03 MB

files.visionaudiovisual.com/products/CS-1900P/images/CS-1900P_grille.png

No grille

PNG 4.20 MB

files.visionaudiovisual.com/products/CS-1900P/images/CS-1900P_no_grille.png

No remote

PNG 4.62 MB

files.visionaudiovisual.com/products/CS-1900P/images/CS-1900P_no_remote.png

Master side

PNG 340.84 KB

files.visionaudiovisual.com/products/CS-1900P/images/CS-1900P_master_side.png

Remote

PNG 44.30 KB

files.visionaudiovisual.com/products/CS-1900P/images/CS-1900P_remote.png

Side

PNG 6.54 MB

files.visionaudiovisual.com/products/CS-1900P/images/CS-1900P_side.png

Rear master

PNG 9.65 MB

files.visionaudiovisual.com/products/CS-1900P/images/CS-1900P_rear_master.png

SPECIFICATIONS

LOUDSPEAKER DIMENSIONS

232 x 95 mm / 9.1" x 3.7" (diameter 224 mm without grille)

CUTOUT SIZE

198 mm / 7.8"

CARTON DIMENSIONS

253 x 253 x 273 mm / 10.0" x 10.0" x 10.8"

SPEAKER WEIGHT MASTER

1.3 kg / 2.9 lbs

SPEAKER WEIGHT SLAVE

1.2 kg / 2.7 lbs

CARTON WEIGHT

4.0 kg / 8.8 lbs (per pair)

CONSTRUCTION MATERIAL

Plastic (ABS)

COLOUR

White

AMPLIFIER OUTPUT

2 x 35 watts (RMS)

WOOFER

6.5" Kevlar

TWEETER

0.5" Silk

OUTPUT IMPEDANCE

8 ohms

SENSITIVITY

89 dB (1w/1m)

FREQUENCY RESPONSE

80 Hz-20 kHz

POWER CONSUMPTION

≤ 70 w

LINE-LEVEL INPUT

1 x 2-Phono and 1 x 3.5mm Minijack (summed)

SPEAKER OUTPUT

Phoenix connector

DAISY-CHAIN INPUT

3.5mm Minijack

DAISY-CHAIN OUTPUT

3.5mm Minijack

SPEAKER INPUT

Phoenix connector

ACCESSORIES INCLUDED

1 x Speaker Cable 5 m (16.4') long 1 x Remote Control (Battery included: CR2025 3V Li-Mn)

POWER SUPPLY

100-240v 50/60Hz AC External Power Supply – 24 volt / 3 amp Laptop-style transformer

INCLUDES 4 X 0.5M FIGURE-8 POWER CABLES

UK/EU/US/AU

DC TAIL LENGTH

1.5m (5ft)

TRANSFORMER DIMENSIONS

120 x 52 x 32 mm / 4.72" x 2.0" x 1.2"

WARRANTY

Lifetime return-to-base

COMPLIANCE

RoHS, CE/EMC, IEC, RCM-SDOC, RCM-POC, BT, CE-RED, FCC-BT3, FCC-BT4, REACH

ORDER PART CODE

CS-1900P [EU SAP: 4883105 / US SAP: 13825110]

SPARE POWER SUPPLY UNIT (PSU)

TC2 P24V3A [EU SAP: 3940953/ US SAP: 13445528]

