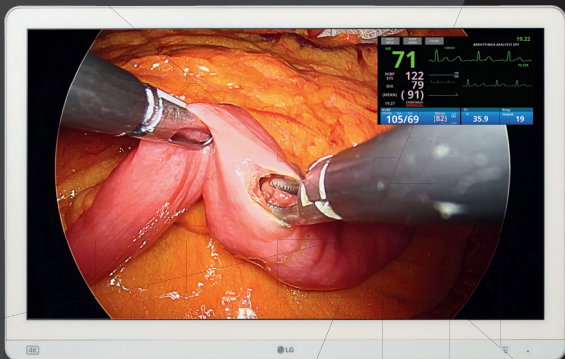




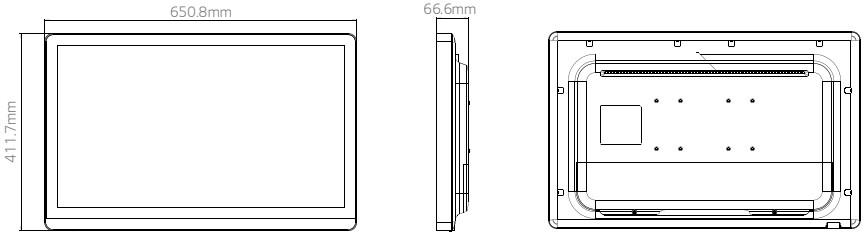
## 27-inch 4K Surgical Monitor with Mini-LED

| 27HQ710S |

- 27-inch 4K (3840x2160) with Mini-LED
- HDR 10, HDR Effect
- sRGB 139% (Area)
- Mirror Mode, Rotation Mode
- Up to 4PBP, PIP
- Protection Glass (1.3t, Anti-reflection, Anti-fingerprint)
- 3G-SDI Support



# Specification

| Model                      |                                   | 27HQ710S  |  |
|----------------------------|-----------------------------------|---|--|
|                            |                                   |   |  |
| Panel                      | Panel Type                        | VA  |  |
|                            | Inch (Aspect Ratio)               | 27-inch   |  |
|                            | Resolution                        | 4K (3840 x 2160)  |  |
|                            | Backlight Technology              | Mini-LED  |  |
|                            | Surface Treatment                 | Protection Glass (1.3t, Anti-Reflection, Anti-fingerprint)  |  |
|                            | Color Gamut (Typ.)                | DCI-P3 110.9% (CIE1976, Area), DCI-P3 98% (CIE1976, Coverage), sRGB 139% (Area), sRGB 100% (Coverage)   |  |
|                            | Viewing Angles (CR≥10)            | 178° (Right / Left), 178° (Up / Down)   |  |
|                            | Brightness (Typ.)                 | 800cd/m <sup>2</sup>  |  |
|                            | Contrast Ratio (Typ.)             | 1000 : 1  |  |
|                            | Response Time (GtG <sup>2</sup> ) | 5ms (GtG at Faster)   |  |
| Feature                    | DICOM Compliant                   | Yes   |  |
|                            | HW Calibration                    | Yes (LG Calibration Studio)   |  |
|                            | HDR                               | HDR 10, HDR Effect  |  |
|                            | Super Resolution+                 | Yes   |  |
| Video Signals              | Input Terminals                   | HDMI 2.0 x1, DisplayPort x1, DVI x1, 3G-SDI x1  |  |
|                            | Output Terminals                  | DisplayPort x1, DVI x1, 3G-SDI x1   |  |
| Connectivity               | USB                               | 1 Upstream (ver 3.0), 1 Downstream (ver 3.0)  |  |
| Power                      | AC Input                          | 100-240Vac, 50/60Hz   |  |
|                            | Power Consumption (Max.)          | 120W  |  |
|                            | Power Consumption (DC Off)        | Less than 0.3W  |  |
| Resistance Rating          |                                   | IP45 (Front), IP32 (Except for Front), IK06   |  |
| Certifications & Standards |                                   | IEC (IEC 60601-1 / IEC 60601-1-2), EN (EN 60601-1 / EN 60601-1-2), IEC (IEC 60950-1 / IEC 62368-1 / IEC 55032, 55024), EN (EN 62368-1 / EN 55032, 55024), cUL (ANSI/AAMI ES 60601-1, CSA CAN/CSA-C22.2 NO. 60601-1), FCC (FCC Part 15 Subpart B), FDA (Registration (Class I)), RoHS, REACH, WEEE |  |
| User Convenience           | PBP / PIP                         | Yes (2PBP / 3PBP / 4PBP) / Yes  |  |
|                            | Screen Filp                       | Rotation & Mirror Mode  |  |
|                            | Failover Input Switch             | Yes   |  |
|                            | Hot Key                           | Yes (2 keys)  |  |
|                            | Flicker Safe                      | Yes   |  |
| Physical Specifications    | Weight                            | 8.0 kg  |  |

2) GTG : Gray-to-gray response times.

\*Specifications may vary by region. All features, standards, and other product specifications are subject to change without notice.



**LG Electronics Inc.**

<https://www.lg.com/global/business/virtual-showroom/medical-display>

Copyright © 2022 LG Electronics. All Rights Reserved.