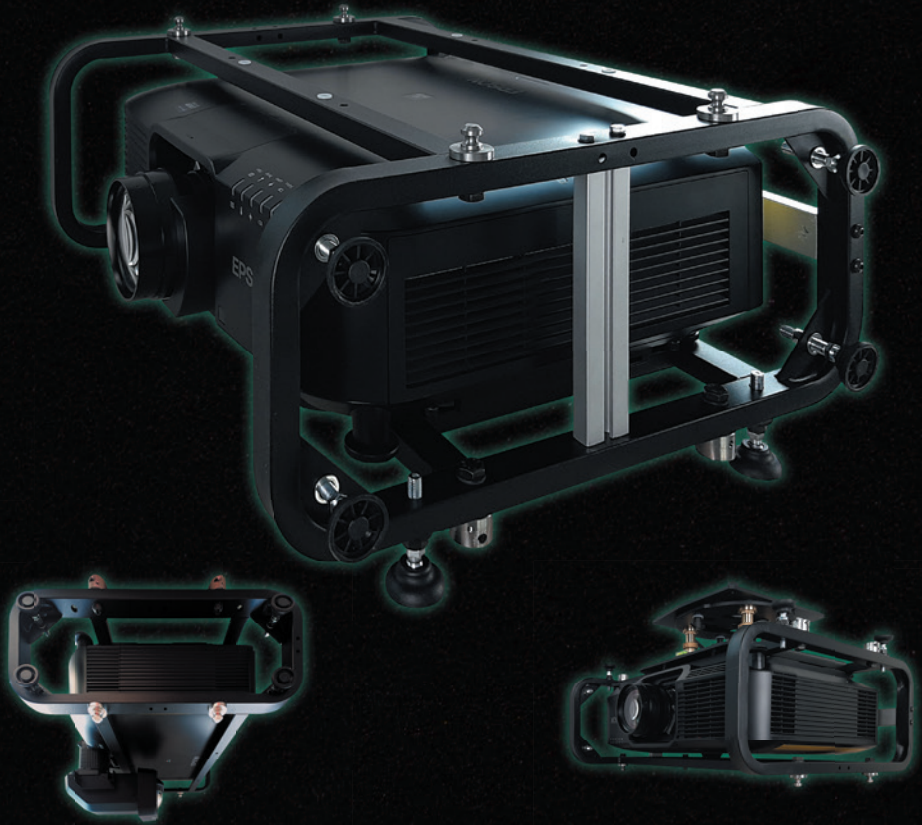


MATRIX



UNLIMITED POSSIBILITIES

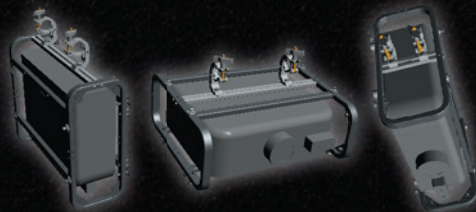
- Matrix is an innovative Rigging and Stacking cage concept and it also makes it possible to protect and enhance projector handling. It enables any kind of installation and projection.
- Clearly marked by a light and compact design, keeping the cage close to the projector, thus making transport and mounting easier.
- Matrix confers a smooth and simple graphic architecture, thanks to the multiple fastening positions for floor, tilted or vertical mounting - also stacked.
- Modularity is its innovative feature, thanks to a large set of accessories that can be added and combined to meet any installation requirement.
- Matrix' efficient design enables to easily use all of the main accessories, such as ultra-short throw lenses, cameras and air filters
- The stacking system is quick, precise and it ensures any configuration, both horizontally and vertically
- All materials are premium quality and carefully selected based on a strict quality check.
- The structure is 100% "Made in Italy"



One-cage-only stacked mode Two-cage stacked mode



Stacked portrait mode



Quick truss installation option

MATRIX

MATRIX OPTIONS
22000 Matrix 1*
22500 Matrix 2**

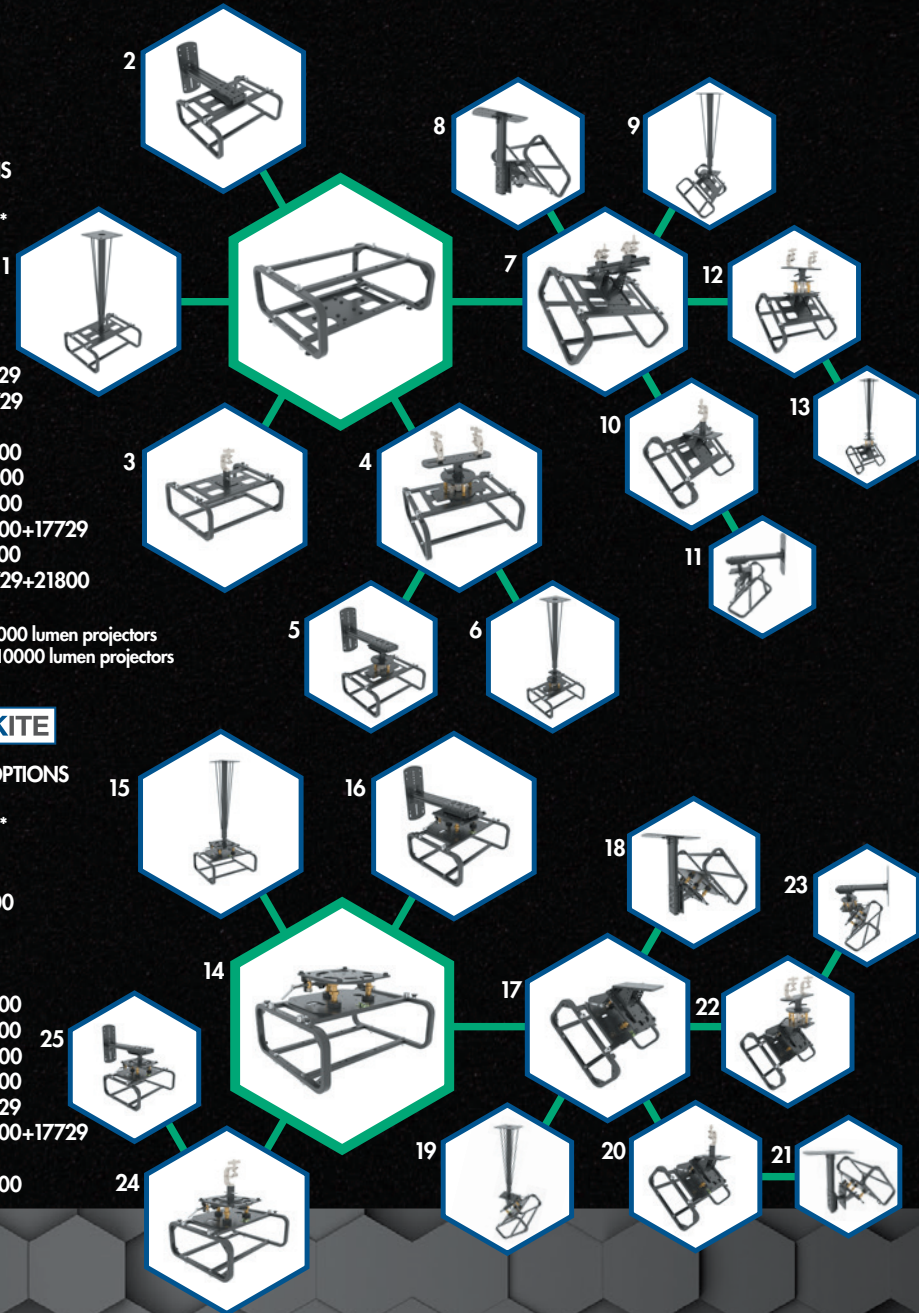
- 1 +22334
- 2 +21500
- 3 +22100
- 4 +17728
- 5 +21500+17729
- 6 +22334+17729
- 7 +21800
- 8 +21800+21500
- 9 +22334+21800
- 10 +21800+22100
- 11 +21500+21800+17729
- 12 +17728+21800
- 13 +22334+17729+21800

* Matrix 1: Up 10000 lumen projectors
** Matrix 2: Over 10000 lumen projectors

MATRIX KITE

MATRIX + KITE OPTIONS
22000 Matrix 1*
22500 Matrix 2**
21400 KITE

- 14 22000+21400
- 15 +21334
- 16 +21500
- 17 +21800
- 18 +21800+21500
- 19 +21334+21800
- 20 +21800+22100
- 21 +21800+21500
- 22 +21800+17729
- 23 +21500+21800+17729
- 24 +22100
- 25 +22100+21500



UNLIMITED POSSIBILITIES

MATRIX

MATRIX

MODULAR
SOLUTION

KITE
MICROMETRIC - TILT
X-PITCH: $\pm 5^\circ$
Y-ROLL: $\pm 5^\circ$
Z-YAW: $\pm 4^\circ$



ARM
ROTATION: 360°
SETTING: 90°
SHIFT: 0-500 mm

SHARK
TILTING: $0-45^\circ$

0: +500 mm

$\pm 6^\circ$

$0-45^\circ$