

Neets Audio Amplifier V3

LAN-controlled Amplifier with RS-232 Break-out Feature



HIGHLIGHTS

- **2 x 25 W audio amplifier**
Power to drive most classroom and conference room loudspeakers.
- **3 x stereo line inputs**
Connect multiple audio sources such as Blu-ray/DVD players, laptop computers, media servers, etc. Two unbalanced and one balanced input.
- **Built-in web server**
Control functions with web browser by accessing IP address.
- **Balanced microphone input**
Phantom power supplied for condenser microphones.
- **Microphone talk-over function**
Microphone input active along with selected line input.
- **RS-232 loop-through**
Control amplifier and projector from only one RS-232 port on the controller.
- **LAN to RS-232 break-out function**
Adds 3 more RS-232 ports to your AV control system.
- **Input presets**
Adjust input gain and equalization for each audio input.
- **Sturdy, compact module**
Mounts easily inside trunking systems or elsewhere.

ADVANCED AMPLIFIER FEATURES PLUS NETWORK CONTROL

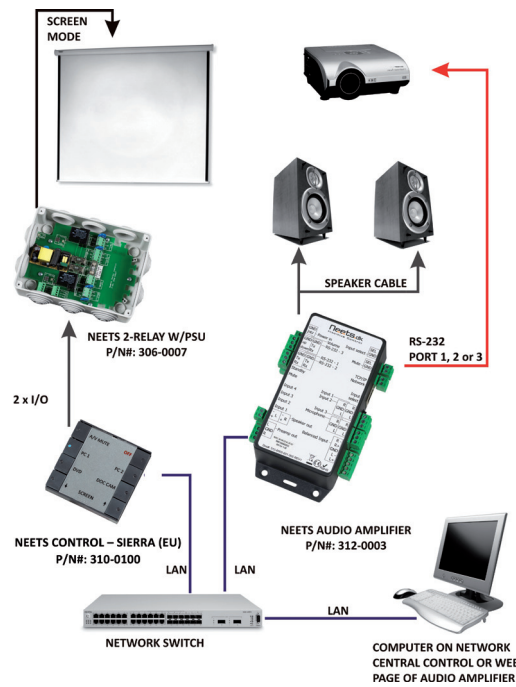
Neets Amplifier Version 3 is the leading model of the Neets amplifier range, offering high output power along with advanced features and flexible control via LAN or RS-232. It is the ideal solution for classroom and conference room AV systems that require an external amplifier with sophisticated features, but where separate rack-mount amplifier cannot be accommodated due to costs and space requirements.

Amplifier Version 3 is based on a high-performance Class D output stage, with 90% efficiency for “green” installations. Fail-safe circuit protection guards against amplifier damage from accidental short-circuiting of the speaker cables. Three stereo line inputs are available (two unbalanced and one balanced), plus one balanced microphone input with +24 V phantom power. Presets for each input can be configured on the unit’s home page via a web browser, allowing separate adjustments for input gain, L-R balance, and bass/treble equalization. A balanced stereo output is provided for connection to an external amplifier for additional speakers or when very high power is required.

Amplifier Version 3 can be linked to a Neets controller via RS-232, LAN, or using the dedicated control inputs for volume, mute and input select. In addition, Amplifier Version 3 offers a unique LAN to RS-232 break-out function which effectively extends the RS-232 capacity of your Neets Control system by adding three RS-232 control ports to the amplifier module. That means, for example, if you have two RS-232 ports on your LAN-compatible Neets Controller, you will have a total of five RS-232 ports simply by connecting via LAN to Amplifier Version 3.

Amplifier Version 3 mounts quickly and easily, with flanges at each end for securing to podiums, overhead ceiling supports or inside standard cable channels. All connections are on Euroblock connectors with mating screw terminals (supplied), except for LAN on standard RJ45 jack.

Neets Control - Audio Amplifier V3 – LAN-controlled Amplifier with RS-232 Break-out Feature



TECHNICAL SPECIFICATIONS

ITEM ORDER NO. 312 – 0003

AUDIO PERFORMANCE:

Power (@ 8 ohm):	2 x 25 W
THD+N @ 25 W (8 ohm):	< 0.35% (@1 kHz – 10kHz)
THD+N @ 1 W (8 ohm):	< 0.1% (@1kHz)
Output efficiency:	up to 90%

AUDIO INPUTS:

Unbalanced inputs:	3
Balanced inputs:	1
Input level (all inputs):	0 VRMS–2 VRMS Nominal: 0.316 VRMS (-10 dBV)
Input impedance:	> 15 kohm (Ω)

AUDIO OUTPUT (PREAMP OUT):

Number of outputs:	1
Connectors:	3 pin 3.82 screw block
Output level:	0 VRMS - 0.316 VRMS
Output impedance:	< 500 Ohm (Ω)

MICROPHONE INPUT:

Number of inputs:	1
Phantom power:	24 VDC
Input sensitivity:	1.5mV/Pa to 5mV/PA +/- 3dB (open circuit @ 1KHz)

RS-232 REMOTE CONTROL:

Control connected to:	RS-232
Baud rate:	9600
Data bits:	8
Stop bits:	1
Parity:	None

RS-232 LOOPTHROUGH

EXTERNAL DEVICE:

Baud rates:	1200-115200 bits/sec.
Parity:	Even, Odd, None
Data bits:	7-8
Stop bits:	1, 1.5, 2

NETWORK (LAN):

Speed:	10/100 MBit
Duplex:	Half and full

SD-CARD (STORAGE CARD):

Type:	Micro – SD, Standard type
Card:	Max size 1GB
File system:	FAT 16

GENERAL:

Power input (AC):	100 – 240 VAC (47-63 Hz)
Power input (DC):	24 VDC 2.5 A (Regulated)
Operating temperature:	0°C to 45°C (Non-condensing)
Dimensions (without connectors):	70mm (2.7") x 150mm (5.9") x 40mm (1.6")
Weight (no PSU):	0.25 kg (0.5 lbs)

INCLUDED IN DELIVERY:

- 1 audio amplifier
- 1 power supply
- Screw blocks for all connectors
- 1 Manual

Neets
Intuitive Control

Phone: +45 75 666 099 • E-mail: sales@neets.dk • www.neets.dk