

# CASING SPECIFIC FREESTAND FOR LG 55XE4F

For the great outdoors

Designed to be a perfect match for LG 55XE4F

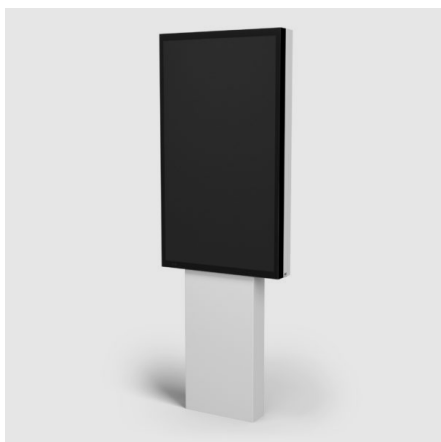
SMS Casing Specific Freestand for LG 55XE4F is perfect for outdoor environment together with the LG 55XE4F series.

The freestand is designed to perfectly match the LG 55XE display in portrait orientation, elegant and robust at the same time. Installation is quick and easy, saving valuable time.

In **Black finish** this product is available for quick deliveries, a great help for those short-time installation projects.

**White** and **Dark Grey** color finishes will be made to order.

The SMS Casing Specific Freestand for LG 55XE4F is designed for portrait orientation only.



## ARTICLE NUMBER

K11-003-1  
SMS Casing Sp Freestand for LG 55XE4F  
BL

## INCLUDED PRODUCTS

SMS Casing Sp for LG 55XE4F BL  
1 x 11-001-1  
Totem for SMS Casing Sp LG 55XE4F BL  
1 x 11-002-1

## INFO

<b>PLACEMENT</b>	Floor
<b>ROTATION</b>	Portrait
<b>FITS MODELS</b>	LG XE4F
<b>SCREEN SIZE</b>	55
<b>WARRANTY [YEARS]</b>	5



SMART MEDIA  
SOLUTIONS

# PRODUCT VARIATIONS

**K11-003-1 - SMS CASING SP FREESTAND FOR LG 55XE4 F BL**

---

**K11-003-4 - SMS CASING SP FREESTAND FOR LG 55XE4 F WH**

---

**K11-003-2 - SMS CASING SP FREESTAND FOR LG 55XE4 F DG**