



OWNER'S MANUAL

SuperSign Media Editor

Please read this manual carefully before operating the product and retain it for future reference.

TABLE OF CONTENTS

3 System Requirements

4 Installing and Uninstalling SuperSign Media Editor

4 Unified Codecs

4 Installing SuperSign Media Editor

7 Deleting SuperSign Media Editor

8 Running SuperSign Media Editor

9 Configuring VideoWall

9 Step 1. Define Layout

18 Step 2. Editing Content

27 Job Manager

27 Job Manager Window Layout and Functions

30 File Menu

30 New

30 Open

31 Save/Save As

31 Delete

32 Exit

32 Settings

32 Server Setting

33 Folder Setting

SuperSign Media Editor

You can configure an irregularly-shaped VideoWall with ease by using SuperSign Media Editor. Add and edit monitors and contents by moving, resizing and rotating them to configure an irregular-shaped VideoWall. When content has been assigned to a monitor it does not fit, you can cut it, which allows you to configure VideoWall with your desired layout. You can send Media configurations created in SuperSign Media Editor to a server and the server distributes the VideoWall through the Media Player.

System Requirements

Item	Specification
CPU	Intel Core i7 3GHz Quad Core or greater
RAM	4 GB or greater
HDD	40 GB or more of free space
Resolution	1280 x 720 or greater
Operating System	Windows 7
Web Browser	Chrome 31 or higher (For standalone mode, Chrome Portable (v31.0.1650.63) in install package.)

Installing and Uninstalling SuperSign Media Editor

Unified Codecs

To use the video crop function, you must install unified codecs before installing SuperSign Media Editor. Websites from which to download unified codecs are listed below:

- <http://www.codecguide.com>
- <http://shark007.net>
- <http://www.free-codecs.com>



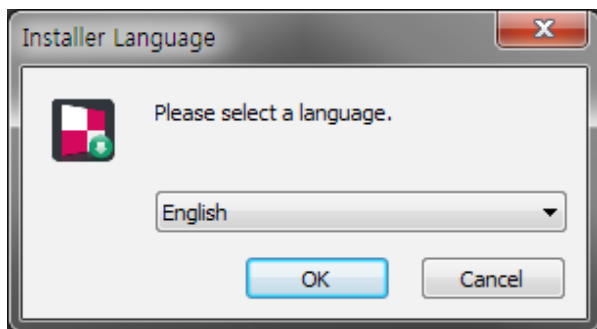
NOTE

- The websites above are not affiliated with LG Electronics, and are subject to change.
- Details about the codec license can be found on the websites.
- Make sure that the codec of the video file you want to crop is included in the download package before you install it.
- Avoid duplicate installations of a codec package.
- If you want to install a different code package, uninstall the previous codec first.

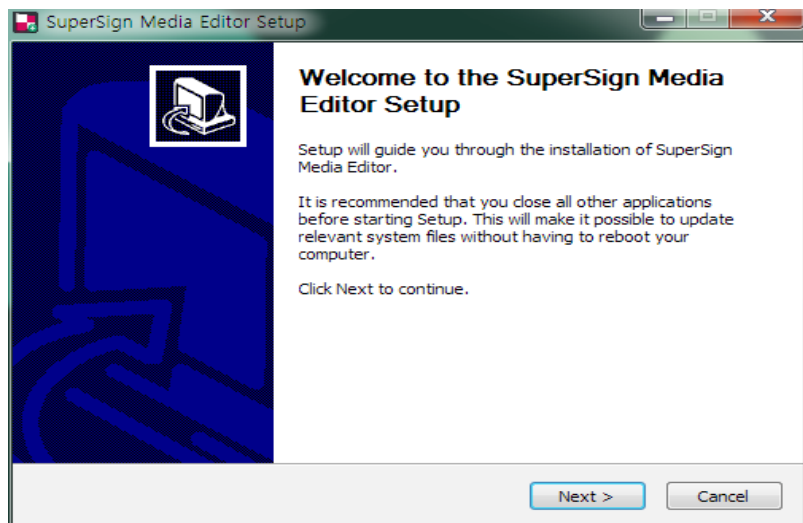
Installing SuperSign Media Editor

Double-click the SuperSignMediaEditor_setup.exe file.

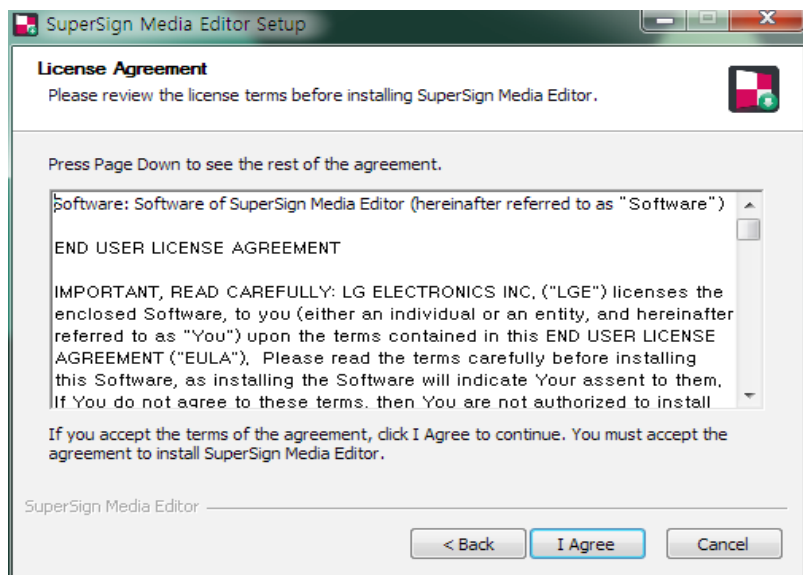
- 1 Select the installation language.



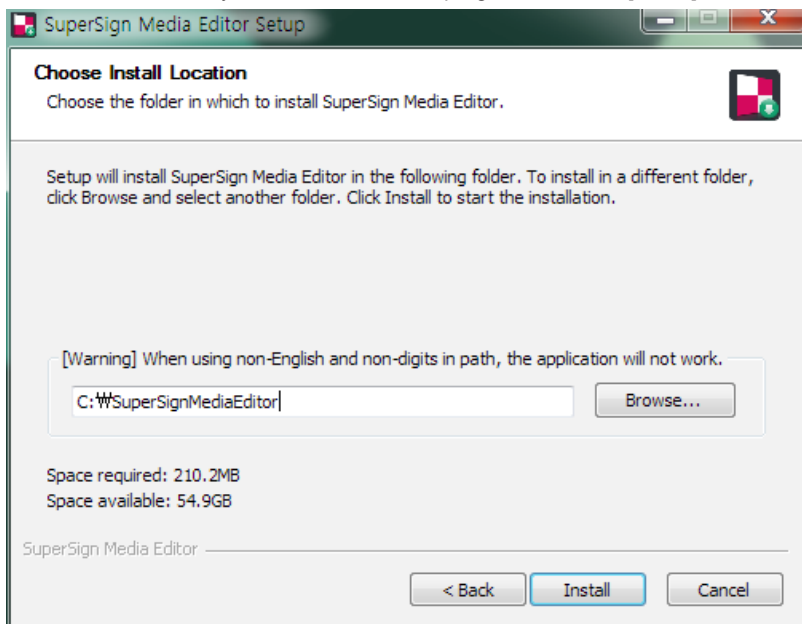
- 2 Read the instructions and click the [Next] button.



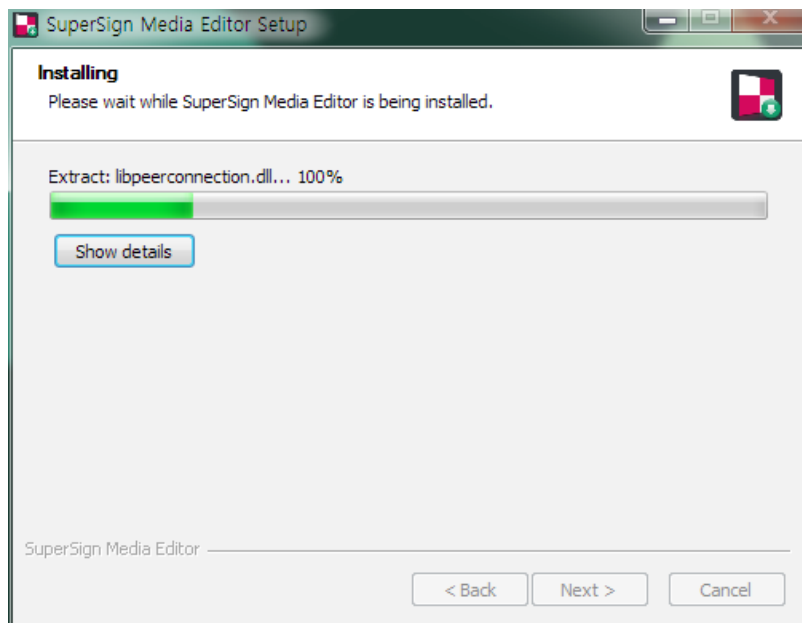
- 3 When the License Agreement screen appears, click [I Agree].



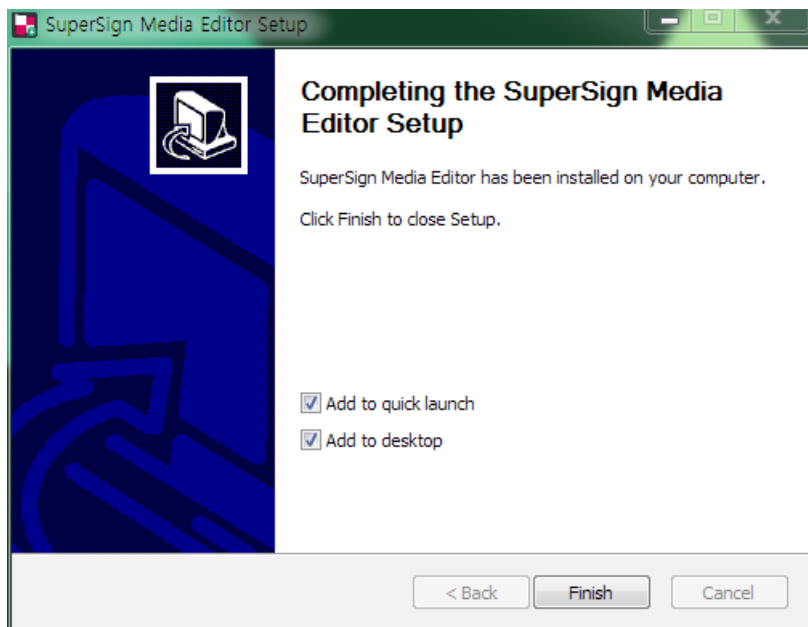
- 4 Select the directory in which to install the program and click [Install].



- 5 The program will be installed automatically.



- 6 When the installation is complete, click [Finish]. The service will start automatically.



NOTE

- Once the installation is complete, the SuperSignMediaEditor service for running Tomcat 7.0 will start automatically.



CAUTION

- If the codec needed is not installed on your PC, the installation of SuperSign Media Editor will terminate.
- SuperSign Media Editor uses port 58080. When another program is using port 58080, SuperSign Media Editor will not run.

Deleting SuperSign Media Editor


Go to [Start] > [All Programs] > [SuperSign Media Editor] > [Uninstall SuperSign Media Editor]. Use the uninstaller provided with SuperSign Media Editor to remove SuperSign Media Editor from your computer. You may not be able to remove SuperSign Media Editor when a web browser is running. Close all Chrome browsers before uninstalling SuperSign Media Editor.

Running SuperSign Media Editor

To run SuperSign Media Editor, go to [Start] > [All Programs] > [SuperSign Media Editor].



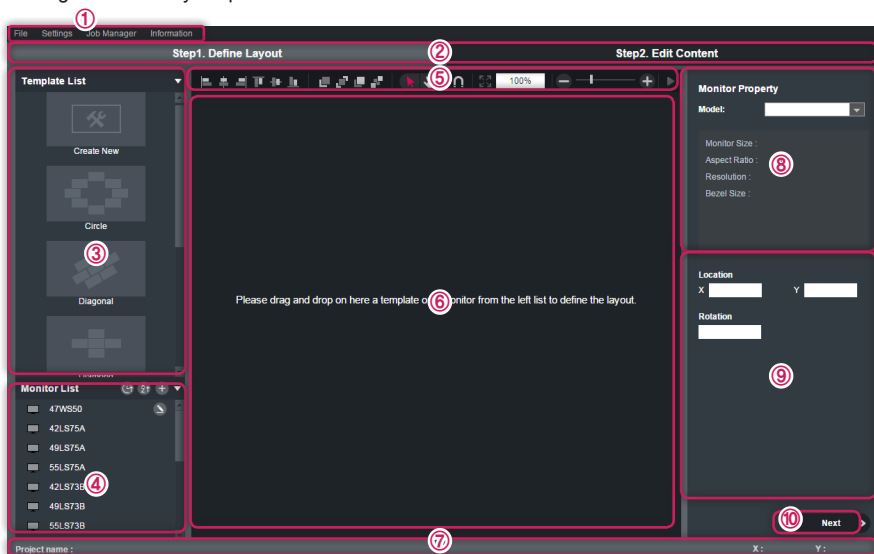
NOTE

- To close SuperSign Media Editor, click [File]> [Exit] on the left of the screen or click  in the top right corner.

Configuring VideoWall

Step 1. Define Layout

When you run SuperSign Media Editor for the first time, the [Step 1. Define Layout] window will appear. In this step, you can define a layout by configuring an irregular-shaped VideoWall by adding monitors to your preference.



No.	Description
①	You can edit your project, manage registered tasks and see information about the program by using menu bar.
②	This shows the current configuration [step] you are in. You can proceed to the next step by clicking the [Next] button in the bottom right corner.
③	You can define a layout with ease by adding one of the default [Template] to the task screen.
④	Shows a list of monitors supported by the SuperSign Media Editor and monitors that you have saved.
⑤	You can use features like [Monitor Alignment], Change [Selection/Hand Tool], [Auto snap], [Zoom], [Preview], etc.
⑥	You can define and edit a layout by adding monitors to the Tasking area.
⑦	This shows information about [Project Name] and [Mouse Position].
⑧	You can select an added monitor to change its model and you can also see information about the model's [Monitor Size], [Aspect Ratio], [Resolution], [Bezel Size], etc.
⑨	This shows information about the [Location] and [Rotation] values. You can change the [Location] and [Rotation] values by entering numbers manually.
⑩	You can proceed to the next step by clicking [Next].

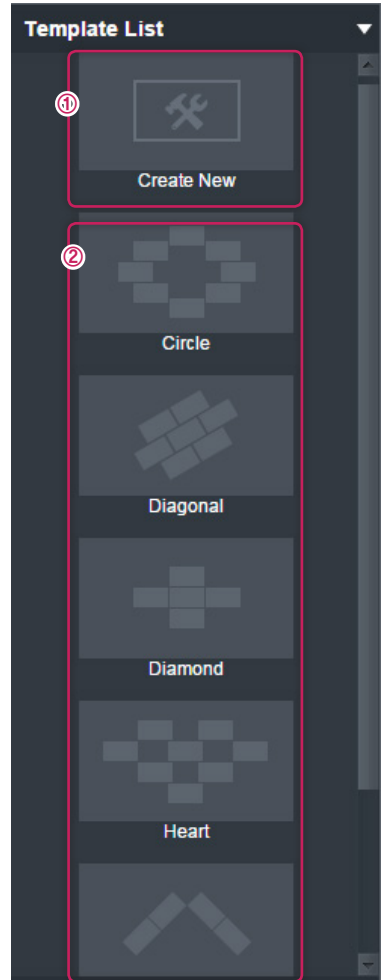
Template

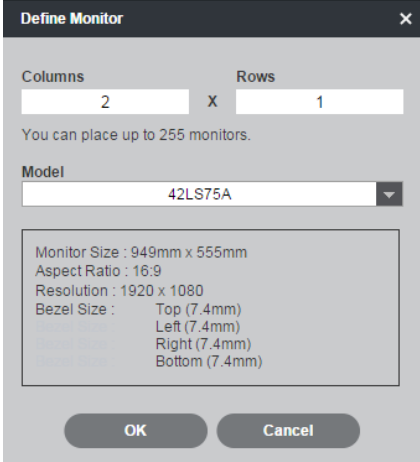

You can use a template defined in [Template List] by double-clicking it or adding it to the task screen by dragging and dropping it. You can edit the layout by moving and rotating the monitors in the added template.




NOTE

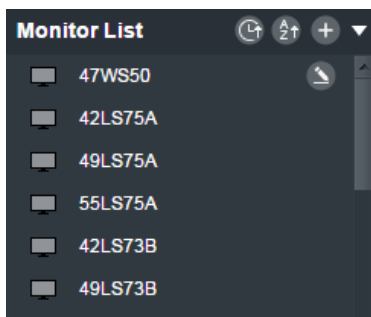
- Drag and Drop*
Drag and Drop is a method where you select an item in a program with the mouse, drag the item by moving the mouse pointer to the desired location, whether it is a different location in the program or in another program, and then drop it there by releasing the button.




No.	Description
①	<p>You can place monitors in a set pattern by entering the rows and columns for the number of monitors. You can place monitors supported by default or monitors that you have entered. You can place up to 255 monitors.</p> 
②	<p>You can place monitors according to the coordinates of the provided templates. If you use this option, you can only place monitors supported by default. (This option does not support 86BH5C monitors.)</p> 

Monitor List


You can view a list of monitors supported by default in the Media Editor and monitors that you have registered. When clicking the  button, the monitor can be sorted by created time or name.



Register Monitor

Click the  button in the [Monitor List] tab to enter information about the desired monitor. Enter the Monitor Name, Monitor Size, Inch, and Bezel Size in the pop-up window, and click the [OK] button to register the monitor.

Modify/Delete Monitor

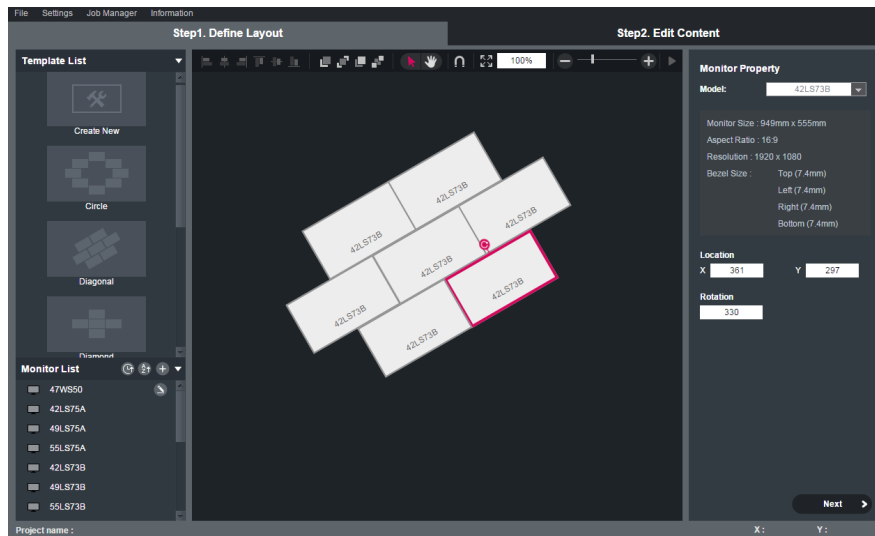
Click the  button on the right side of the added monitor in [Monitor List] to modify/delete the monitor. To modify the monitor, click the [Save] button in the pop-up window. To delete the monitor, click the [Delete] button.

Add Monitor

You can add the desired monitor by dragging and dropping* the desired monitor from [Monitor List] into the workspace. The size of a monitor added to the workspace depends on the size of the monitor model.

How to Select Monitors

You can use your mouse to click and select an added monitor. When monitors are selected, you can [Move], [Rotate], [Delete] or [Align] it.



NOTE

- To select multiple monitors, select monitors one by one while holding down the <Ctrl> key on the keyboard.
- To select all monitors, press <Ctrl+A> on the keyboard.

Moving Monitor

To move a monitor, select it, and drag and drop in the desired location in the task area. When you move a monitor to an area that is to the right of the task area or below it, the size of the task area increases automatically. You can also move a monitor by entering desired values into the Location fields in Monitor Properties on the right.

**NOTE**

- You can move a monitor by using the arrow keys on the keyboard.
- To move a monitor a minute amount, use the arrow keys while holding down the <Ctrl> key.
- If you use your mouse on your work space to drag a monitor, you can move only one monitor.
- If multiple monitors are selected, you can move them by modifying the location values in the Monitor Property menu, or by using arrow keys.

Rotating Monitor

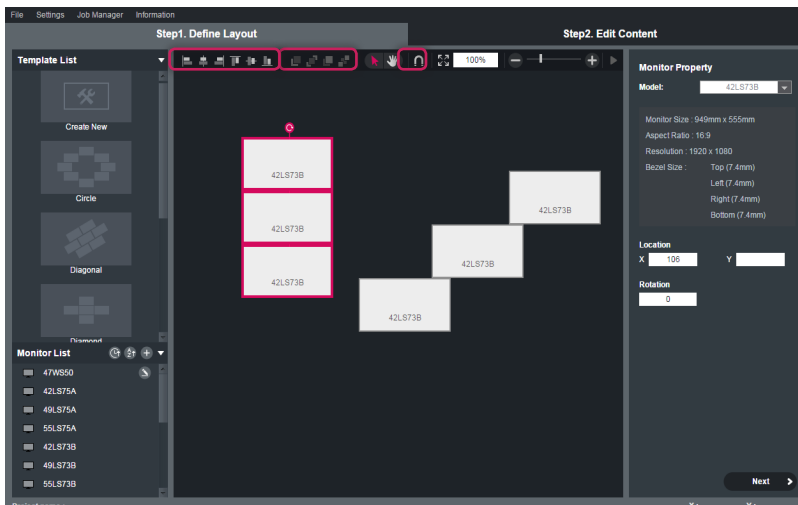
When you select a monitor, the Rotate icon will be activated. You can rotate a monitor by using the Rotate icon. You can also move a monitor by entering a desired value into the Rotation field in Monitor Properties on the right.

Deleting Monitor

To delete a monitor from the task area, select the monitor you want to delete and press the <Delete> key on the keyboard. To delete multiple monitors, select multiple monitors by using the <Ctrl> key on the keyboard and press the <Delete> key.

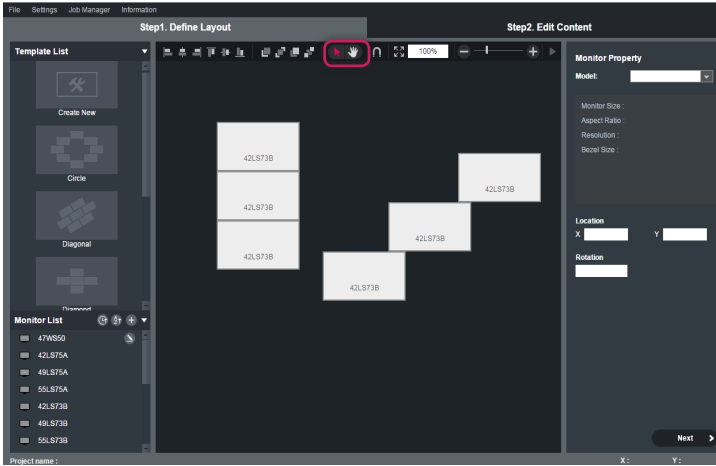
Aligning Monitors

You can select monitors and align them left, center, right, top, middle and bottom. In addition, you can change the order of the layers in the monitor layers stack using the Bring Forward, Bring to Front, Send Backward and Send to Back buttons. You can align monitors only when you select multiple monitors, and you can change the order of the layers in the monitor layers stack only when you select a single monitor. When you move one monitor near to another monitor while using the [Auto snap] function, they automatically stick to each other.



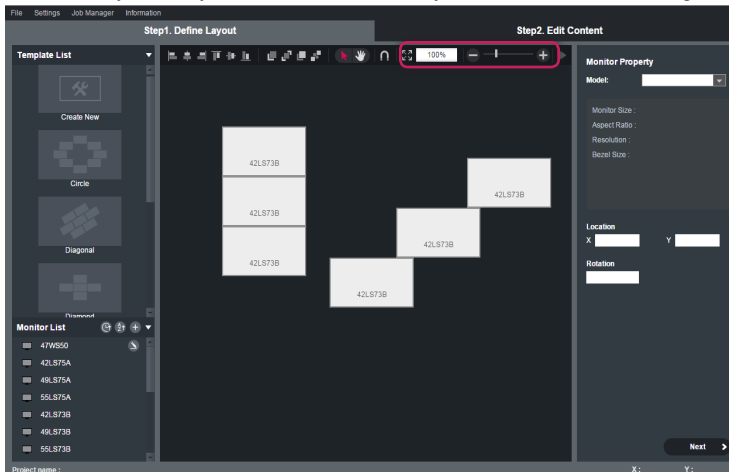
Changing Screen View

If you select the [Selection tool], the mouse pointer is changed to the shape of an arrow pointer, which enables you to select a monitor. If you select the [Hand tool], the mouse pointer is changed to the shape of a hand, which enables you to move the workspace when you enlarge the screen.



Enlarging and Downsizing Screen

The screen enlarging/downsizing function allows you to enlarge or downsize the screen when editing a monitor. If you select the [View in one screen] icon, the screen is enlarged or downsized automatically so that you can view the whole layout of the monitor on a single screen.



NOTE

- You can only zoom out up to 50%. Therefore, if View in one screen is selected and the monitors are placed widely apart, some monitors may not be placed in single screen.

Setting and Changing Monitor Model

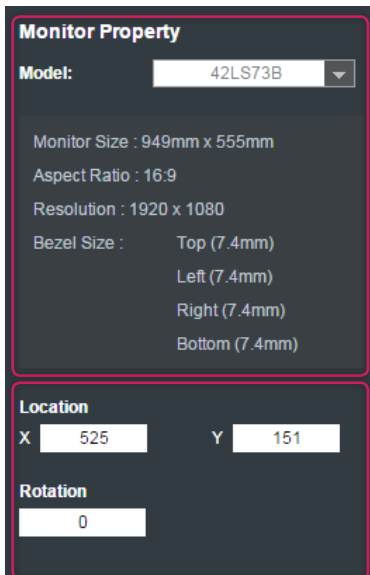
If you select a monitor and then select a monitor model in Monitor Properties on the right, you can set the model of the monitor or change the existing model of the monitor. You can set or change the models of multiple monitors by selecting multiple monitors by using the <Ctrl> key on the keyboard. If you select a monitor model, you can see information about [Monitor Size], [Aspect Ratio], [Resolution], [Bezel Size], etc. If you select a monitor in the task area, you can see information about the model of the selected monitor.

Checking and Changing Monitor Information

If you select a monitor, you can see information about the [Location] and [Rotation] values of the monitor. To change the [Location] and [Rotation] values of the monitor, enter [Location] and [Rotation] values manually.

Moving to the next step

After you have defined a desired layout, click [Next] in the bottom right to proceed to the step in which you edit the contents of the defined layout.



Monitor Property

Model:

Monitor Size : 949mm x 555mm

Aspect Ratio : 16:9

Resolution : 1920 x 1080

Bezel Size : Top (7.4mm)
 Left (7.4mm)
 Right (7.4mm)
 Bottom (7.4mm)

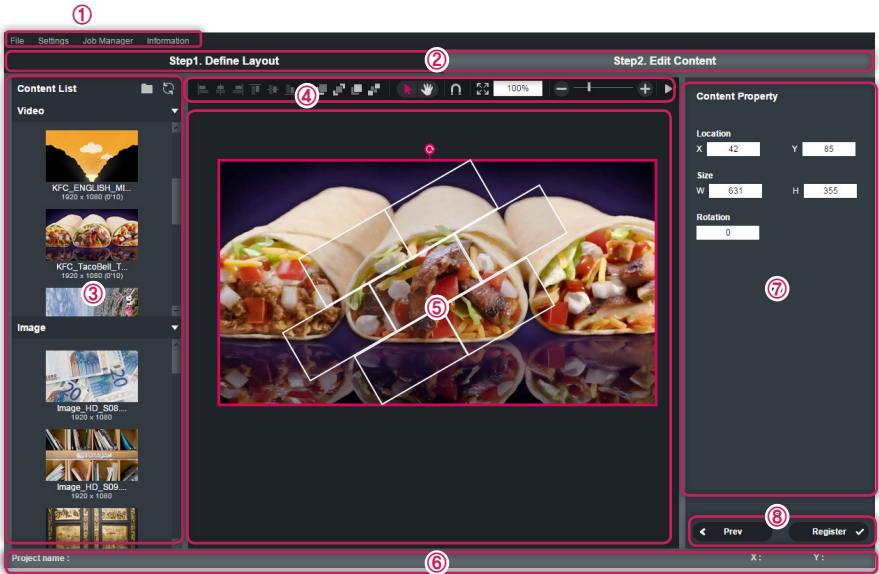
Location

X Y

Rotation

Step 2. Editing Content

Click [Next] in [Step1. Define Layout] to proceed to the [Step2. Edit Contents screen]. In Step 2, you can configure VideoWall by assigning content to a defined layout.

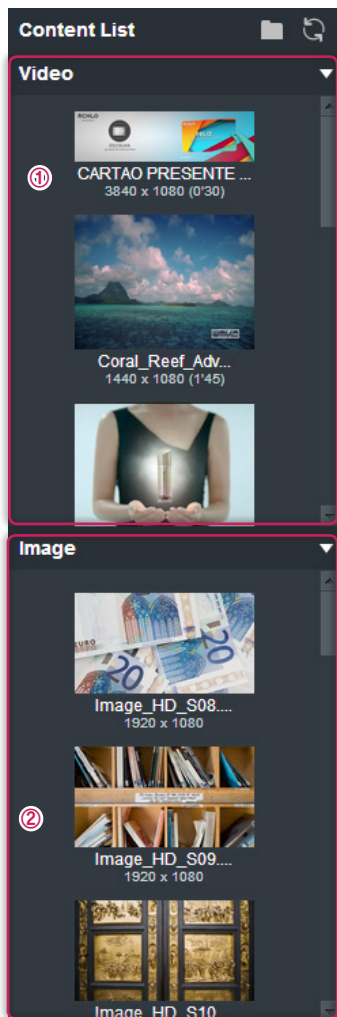


No.	Description
①	You can edit your project, manage registered tasks and see information about the program by using menu bar.
②	This shows the current configuration [Step] you are in. You can go back to the previous step by clicking [Prev] and you can register a task by clicking [Register].
③	You can place image and video content in [Content List] onto a defined monitor layout.
④	You can use features like [Content Alignment], Change [Selection/Hand Tool], [Auto snap], [Zoom], [Preview], etc.
⑤	You can configure VideoWall by adding a content to [Workspace] and editing it.
⑥	This shows information about [Project Name] and [Mouse Position].
⑦	This shows information about the [Location] and [Rotation] values of the content. You can change the [Location] and [Rotation] values of the content by entering numbers manually.
⑧	You can go back to the previous step by clicking [Prev] and you can register a task by clicking [Register].

Content

[Content List] shows the image and video content located in the folder set as [Input content folder].

No.	Description
①	Shows a list of video files contained in the Input content folder. (wmv/avi/mp4/mov/mkv/ts/tp/mpg/mpeg/flv)
②	Shows a list of image files contained in the Input content folder. (jpg/jpeg/bmp/png)



Adding Content

You can add content in [Content List] to the task area by dragging and dropping* it. When you drag and drop* the content to the monitor, it will be added after being adjusted to match that monitor. You can drag and drop* the content onto an empty space in your work space to register it to Job Manager for cropping.



NOTE

- Drag and Drop*

Drag and Drop is a method where you select an item in a program with the mouse, drag the item by moving the mouse pointer to the desired location, whether it is a different location in the program or in another program, and then drop it there by releasing the button.

- As the video crop is processed by a 16 x 16 macroblock, a size error may occur in the output contents. If the resolution of the input content is low, the error may look bigger. Therefore, it is recommended to use full HD or higher resolution.

How to Select Content

You can use your mouse to click and select added contents. When contents are selected, you can [Move], [Resize], [Rotate], [Delete] or [Align] them.

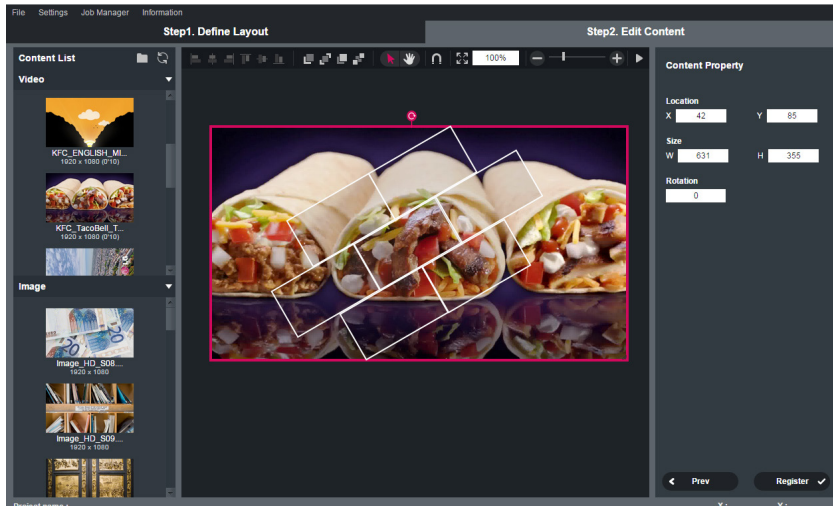


NOTE

- To select multiple contents, select contents one by one while holding down the <Ctrl> key on the keyboard.
- To select all contents, press <Ctrl+A> on the keyboard.

Moving Content

To move content, select content, and drag and drop it in the desired location in the task area. When you move content to an area that is to the right of the task area or below it, the size of the task area increases automatically. You can also move content by entering desired location values into the Location fields in Content Properties on the right.



NOTE

- You can move content by using the arrow keys on the keyboard.
- To move content a minute amount, use the arrow keys while holding down the Ctrl key.
- If you use your mouse on your work area to drag contents, you can move only one.
- If multiple contents are selected, you can move them by modifying the location values in the Content Property menu, or by using arrow keys.
- You cannot move the contents added to the monitor.

Resizing Content

You can drag the content after selecting it to resize it.



NOTE

- It is not possible to change the size of added content inside a monitor.
- Content added to the work space will be converted to the same aspect ratio as the original content in order to crop it.

Rotating Content

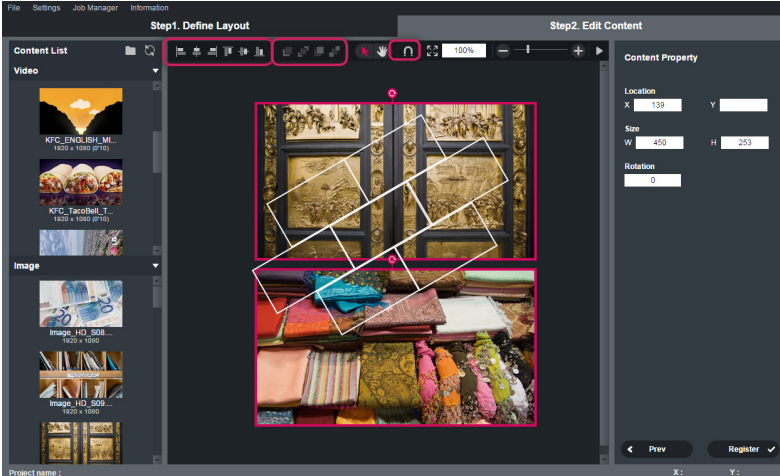
When you select content, the Rotate icon will be activated. You can rotate content by using the Rotate icon. You can also move content by entering a desired value into the Rotate field in Content Properties on the right.

Deleting Content

To delete content from the task area, select the content you want to delete and press the <Delete> key on the keyboard. To delete multiple contents, select multiple contents by using the <Ctrl> key on the keyboard and press the <Delete> key.

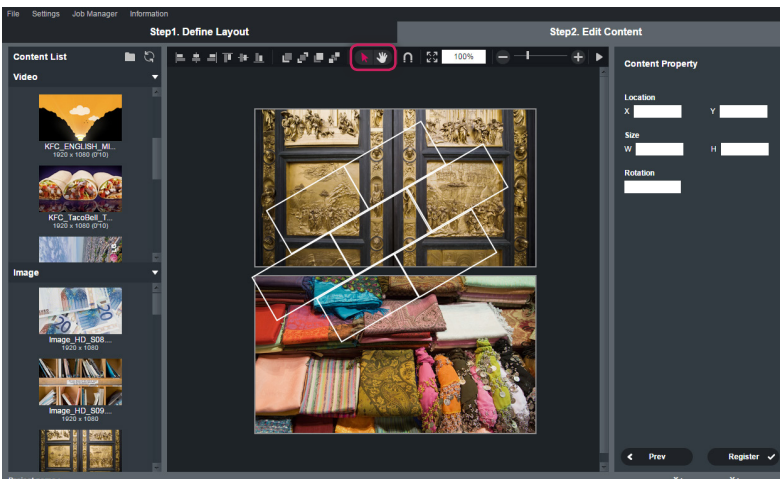
Aligning Contents

You can select contents and align them left, center, right, top, middle and bottom. In addition, you can change the order of the layers in the content layers stack by using the Bring Forward, Bring to Front, Send Backward and Send to Back buttons. You can align contents only when you select multiple contents, and you can change the order of the content layers only when you select a single content file. When you move a content file near to another content file while using the [Auto snap] function, they automatically stick to each other.



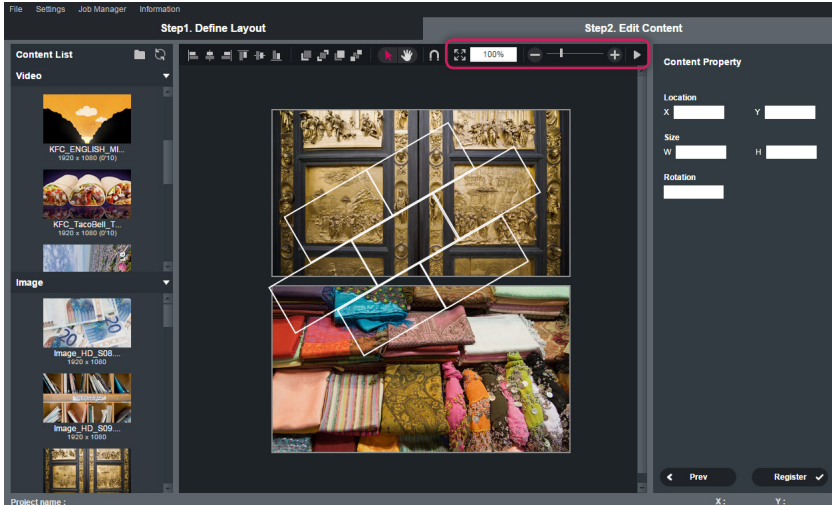
Changing Screen View

If you select the [Selection tool], the mouse pointer is changed to the shape of an arrow pointer, which enables you to select a content. If you select the [Hand tool], the mouse pointer is changed to the shape of a hand, which enables you to move the workspace when you enlarge the screen.



Enlarging and Downsizing Screen

The screen enlarging/downsizing function allows you to enlarge or downsize the screen when editing content. If you select the [View in one screen] icon, the screen is enlarged or downsized automatically so that you can view the whole layout of content on a single screen.

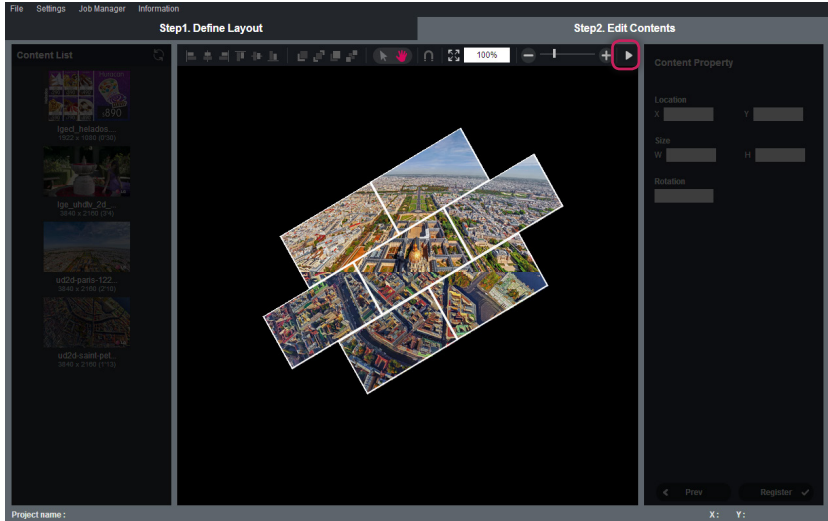


NOTE

- You can only zoom out up to 50%. Therefore, if View in one screen is selected and the monitors are placed widely apart, some monitors may not be placed in single screen.

Preview

If you click the [Preview], you can preview how VideoWall will look after you configure an irregular-shaped VideoWall and send it to the monitor.



Checking and Changing Content Information

If you select content, you can see information about the [Location], [Size] and [Rotation] values of content. To change the [Location], [Size] and [Rotation] values of content, enter [Location], [Size] and [Rotation] values manually.

Content Property

Location

X Y

Size

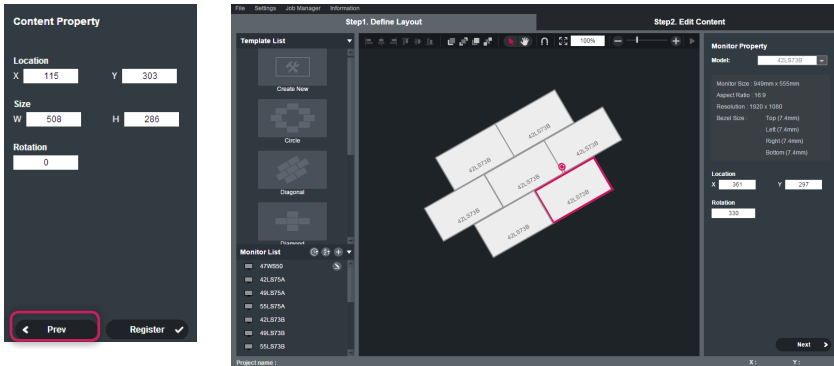
W H

Rotation

✓

Going Back to Previous Step

When you want to change the layout of the monitor while editing content, click [Prev] to go back to [Step1. Define Layout]. If you choose to go back to Step 1, the content you were editing will be hidden from the screen to allow you to change the layout of the monitor. When you proceed to Step 2 after changing the layout of the monitor, you can resume editing the content you were working on.

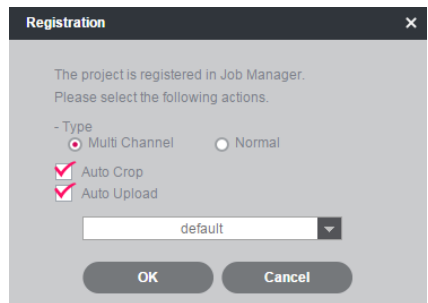


Registering Task

When content is edited and the video wall is configured, click [Registration] to register a job in the Job Manager. In the Job Manager, you can [Crop] or [Upload] jobs. When you crop video content, go to Type to select [Multi Channel] for low definition, or [Normal] for high definition.

NOTE

- To register a task to [Job Manager], the play times of all contents must be the same.

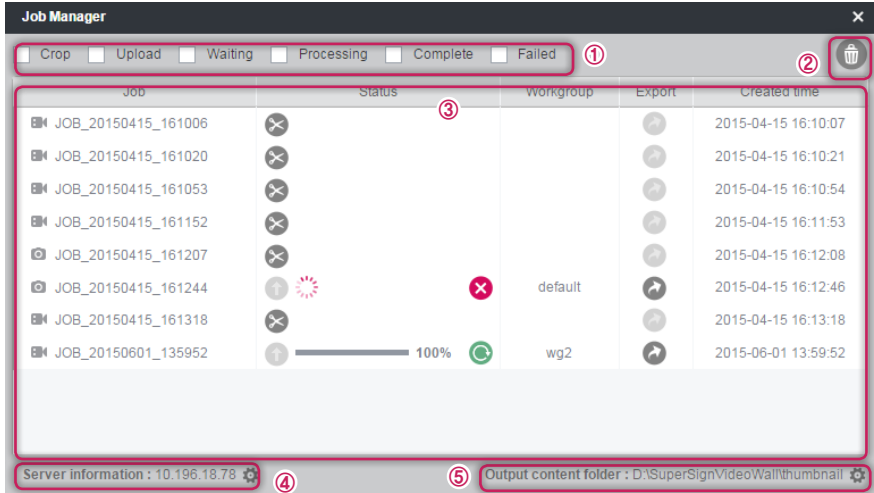


Job Manager

Task Manager allows you to check and manage ([Start], [Export], [Cancel], [Delete]) the whole task.

Job Manager Window Layout and Functions

The following shows the layout and functions of the Job Manager window.



No.	Description
①	You can sort the job list by [Crop], [Upload], [Waiting], [Processing], [Complete], and [Failed]. You can select multiple sorting criteria.
②	You can use the Delete icon to delete a desired task.
③	Details including information on [Job] name, [Status], [Workgroup], [Export], [Created time] are displayed.
④	You can check and change the IP address of the server which is going to store the media file when you upload a media file you edited in SuperSign Media Editor to the SuperSign server.
⑤	You can check and change the folder which stores the media file when you [Export] a media file.

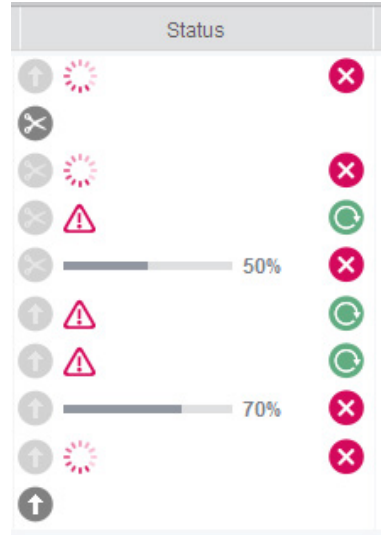



NOTE

- You cannot [Export] or [Delete] a task in progress.
- When a task is being deleted, some functions such as [Filter], [Server Setting], [Folder Setting] and [Job Management] may not be available.
- Therefore, it is recommended to define the layout and edit the content after completing the video crop.
- The video crop consumes a large amount of system resources and may slow down the performance of your PC.
- Cropping Images/Videos
 - Images will be cropped according to the ratio of the original image and the monitors.
 - Videos will be cropped according to the resolution of the monitors.

Using Status Icon

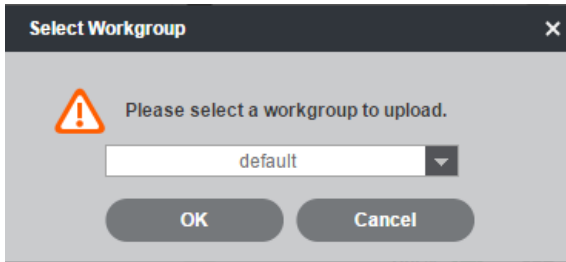
The current status of a task is displayed as an icon. You can execute a task by selecting the corresponding icon.



Icon	Description
	Indicates that you are performing a video/image crop task. Select this icon to start a crop task.
	This icon shows that the task is in Upload to Server status. You can start uploading the task to the server by selecting the icon.
	This icon allows you to re-start the task.
	This icon allows you to cancel the running task.
	This icon shows that the task is pending.
	This icon shows that the task failed or there is a problem with the task.
	The display bar shows the progress of the task.  70% : Task in Progress

Select Workgroup

If you select Upload in the Job Manager and log in to the SuperSign Server, a list of workgroups designated for your login account is displayed. Select the desired workgroup in the workgroup list to upload media files to the workgroup.



Crop Task and Filter Application

In the Job Manager, you can sort the tasks using the video/image crop task filter and the upload filter. You can apply multiple filters.

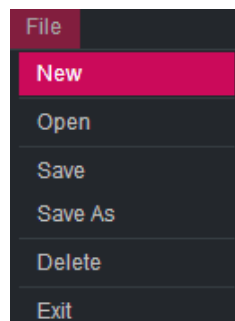
Filter Items	Feature
Crop	Preparing to process the video/image crop task
Upload	Preparing to upload the file to the SuperSign server
Waiting	Waiting to process the task
Processing	Processing the task
Complete	Completed the task
Failed	Suspended the task due to a failure during processing

File Menu

In File Menu, you can use six functions: [New], [Open], [Save], [Save As], [Delete], and [Exit]. You can manage the project by clicking a desired menu.

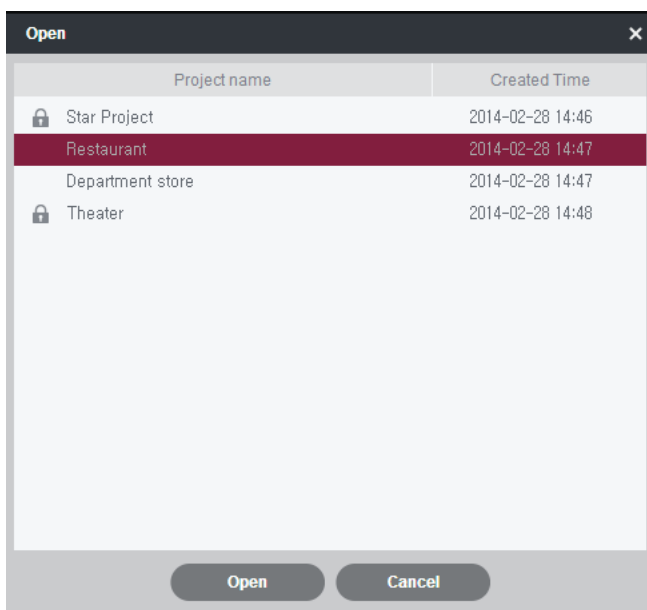
New

You can open a new task space. You can save all the tasks you were working on.



Open

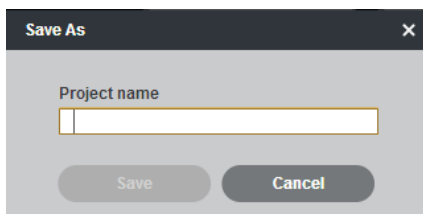
You can load a saved project. If you select a saved project and click [Open], the project is loaded as it was at the time of saving. However, you cannot load a project with a lock icon.



Save/Save As

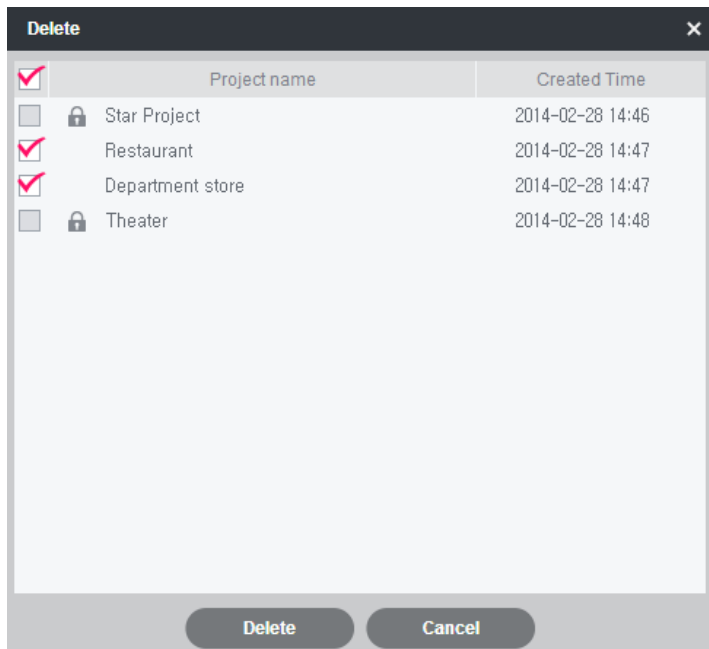
You can save a project you have edited. If the project is new, you can save your work at each step with a new name. However, you cannot save a project with a name that is already being used by a saved project.

If you have loaded a project using [Open], when you click [Save], the project you were working on will be saved with a name that is the same as the current project name. To save with a new name, click [Save As].



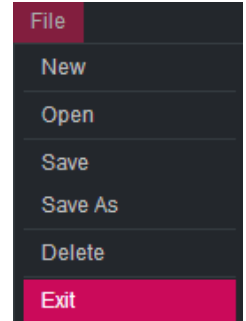
Delete

You can delete a saved project. To delete a saved project, select the saved project and click [Delete]. In addition, you can delete multiple projects at once by using checkboxes.



Exit

You can exit the SuperSign Media Editor program. You can save all the tasks you were working on.

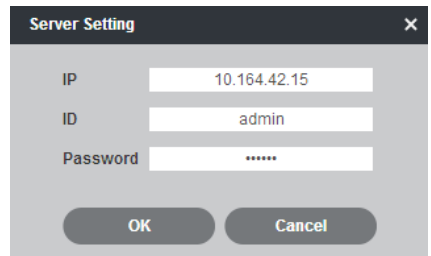


Settings

You can change your SuperSign Server connection information and change the content folder.

Server Setting

To upload the VideoWall configuration created in SuperSign Media Editor to the SuperSign Server, you need to register your SuperSign Server connection information. Enter the [IP] address, [ID] and [password] for the SuperSign Server and click [OK]. The validity of your SuperSign Server connection information is then checked and if the information is valid, it is saved in the system.



Folder Setting

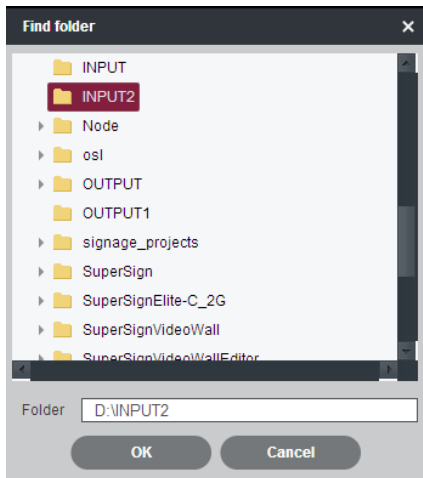
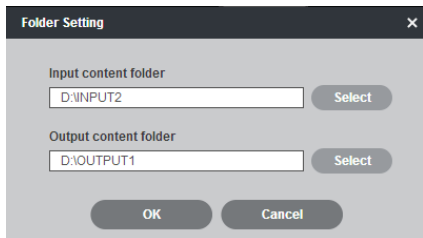
Sets the input content folder to create a content list which you will use in [Step2. Edit Contents]. You can also specify an output content folder to be used to store contents which underwent video cutting. When you click [OK] after selecting an input content folder and an output content folder, information about the selected folders is saved in the system and the content list will be updated.

Click [Select] in the Folder Settings window and use [Find Folder] to select an input content folder and an output content folder with more ease.



NOTE

- SuperSign Media Editor is a web-based software program that runs in a web browser. For security reasons, it does not provide a [New Folder] function.





To obtain the source code under GPL, LGPL, MPL and other open source licenses, that is contained in this product, please visit

<http://opensource.lge.com>.

In addition to the source code, all referred license terms, warranty disclaimers and copyright notices are available for download.

LG Electronics will also provide open source code to you on CD-ROM for a charge covering the cost of performing such distribution (such as the cost of media, shipping and handling) upon email request to opensource@lge.com. This offer is valid for three (3) years from the date on which you purchased the product.